

Studio Newsletter

February 21, 2007

Volume 2, Issue 2

Special points of interest:

- Our next meeting is Thursday, March 1, at 7:00 p.m. in the Potter's Studio.
- Rachel will start new wheel classes on Tuesday, March 6. Holly will start new hand-building classes in mid-March.
- Studio Videos are still missing.
- Submit news articles to Sharon Wetherby by the 10th of each month.

Inside this issue:

March Program	1
February Meeting Minutes	1
February Speaker	2
President's Space	3
Event Notices	5
Editor's Ramblings	5
Organization Info	6

March Program

Extruding. Carole Standridge and Don Hudnall will be discussing extruding. This will be the basics of how to for new members. They will extrude

"disks" during the demo. You can use these disks to stamp your name and use as identifiers for your wet/leather/greenware. Much better than writing your

name on a paper towel.

~ Don Hudnall

February Meeting Minutes

Don Hudnall called the meeting to order at 7:00 p.m. and read the minutes from January. Cristi Allen motioned that we accept the minutes as published in the newsletter, and Barbara Throne seconded the motion. The January Meeting Minutes were accepted as published.

Welcome new members/guests. Don introduced two new members, Jay Webb and Doris Brown, a returning member, as well as Stormy Parker, who was not able to attend the February meeting. Jay has taken classes at TCC.

Newsletter Report. Our editor Sharon Wetherby encouraged members to submit information to

her for the newsletter by the 10th of each month so she will have time to incorporate the articles and publish the newsletter a couple of weeks before the next meeting. Barbara Throne reported that she has submitted her article to the LMRA Newspaper. It will be on the newsstands around the first of March.

Website Report. Don wasn't able to talk with Sarah Fields about updating our website. He will talk with her about an update.

Glaze Committee. Don reported that the glaze room has been rearranged. The cone 10 glazes are in white buckets, the cone 6 glazes are in green buckets and the raku glazes

are in orange buckets. The glaze committee has a large supply of test tiles extruded from Texas Pottery White and Texas Pottery T10S (a dark clay body).

Old Business.

The Studio's video tapes are still missing. Don will try to contact Cheryl Walker and/or Joanna Royce to determine if they might be able to provide any information.

Empty Bowls. Carole took about sixty bowls to Janet Rodriguez's Hart Street Pottery for delivery to the Food Bank. Janet will accept additional bowls until February 12. Debbie Stewart donated a great ceramic box for the Empty Bowls Event. Sharon Wetherby will deliver it and

February Meeting Minutes (cont'd)

the small Soto Slip demo bowls from January's meeting to the Food Bank along with bowls that she will be firing after the kilns are up and running again. Silent Auction of ladder stands. Carole Standridge and Sharon Wetherby were high bidders on the ladder stands. Current Studio Classes. Holly's hand-building classes and Rachel's wheel classes are underway. Rachel will start new classes on Tuesday afternoon/evening on February 20. Her two-hour classes run for six weeks and are limited to 8 students. Holly's three-hour classes run for five weeks and are limited to 6 students. Look for sign-up sheets posted on the cabinets above the sink in the main room.

New Business.

Electric Kilns. Jim Harley will work on our kilns this weekend. Don talked with Joanna, who told him that she used the old kiln-sitter kiln only for bisque firing. Don will talk with Jim Harley to see if the kiln can be repaired so that we can fire cone 6 in it. Maybe we need to put a new kiln on our Christmas wish list if the old kiln is beyond repair. Ron Hollister volunteered to fire any bowls that are ready for cone 6 firing for Empty Bowls in his home studio. PIP (1st Meeting). Cristi Allen reported that she has already reserved space for this year's sale. This year's sale is scheduled from 10:00 am till 5:00 pm on October 13 and 14. The Studio will charge \$30/space and allow a maximum of two artists to share a space. The

deadline for signing up for a space is Friday, October 5. The charge will increase to \$40 /space for late comers after the deadline. Three pots will be selected at the April meeting for the PIP advertising and for the pot raffle at the sale. The PIP committee will not meet for a couple of months, but Cristi will coordinate with Sharon Wetherby to work up invitations to the artists for this year's sale. Empty Bowls 2008. Don urges everyone to think bowls all during the year so we can donate more for this worthy event to feed the hungry in Tarrant County. Cone 10 Firing. Ron Hollister has volunteered to fire the gas kiln on February 23. Studio Cleanup. The Studio is beginning to need a house-cleaning. Don encourages everyone to come out to the Studio at 1:00 pm Sunday, February 18, for a Studio **Cook & Clean** afternoon. Carole Standridge reported that she did a long overdue bisque pot purge last weekend. She moved the pots to the shelves above the pug mill. Please come out to the Studio to either claim your pieces or consider donating them to the Studio for this year's PIP raku firings. Carole also urges us to store our personal containers of glaze, slip, clay, etc., in our lockers or at home rather than leaving them scattered around the Studio. Pot Draw. Orby Chamblee was not able to attend this month's meeting, but he provided a fabulous woven container for this month's pot

draw. Cristi Allen was the lucky winner. She will bring the pot for the March meeting.

~ Sharon Wetherby
for Holly Thompson

Speaker Highlight (Ron Hollister, Glaze Committee).

Why is glazing such a hassle?

The process of glazing is next to the final step; if it doesn't work out, all the earlier effort is wasted. We can't easily fix glaze problems after firing. There are a number of variables that affect the outcome: the clay used, fit (shivering, crazing), additional fluxing (porcelain), the form of the pot, texture, the amount of glaze on the piece, density (specific gravity), interaction between glazes, order of application, other glazes on the other pieces in the kiln, firing environment, temperature, reduction or oxidation.

Problems we create. Trying to get a reduction look from an oxidation firing, trying to be too creative.

Solutions. Keep it simple, less is better, know what you want your piece to look like before you start glazing, limit each glazing session to one or two glaze combinations, make test tiles using your clay.

What the Pottery Studio can do for you. Standardize firing environments, provide a limited palate of tested glazes, provide test tiles of

(cont'd on page 4)



Monday night class



Monday night class

**Studio Cook &
Clean ~ Sunday,
February 18**

**Cone 10 firing ~
Friday, Feb 23**



Recent Happenings at the Studio. Hello members.

Just wanted to bring you up to speed on what is happening at the studio. There is a LOT happening and hope you have been keeping it all straight. There is just so much to talk about I will put it in bullet points below.

- **Studio Cook & Clean:** Nine people turned out to help clean the studio. That is a GREAT turnout. Used to be there would be only three or four people, so nine is awesome. We also grilled hamburgers/hot dogs, had nachos, brownies, deviled eggs and a beautiful day. Cleaning the studio took no time at all, and it was a lot of fun.
- **Wheel Class:** Rachel's wheel class has been rescheduled to start on March 6. The sign-up sheet is at the studio. Everyone raved about her classes she just finished, so I hope you have an opportunity to learn from Rachel if you have not already.
- **Handbuilding Class:** Holly Thompson just finished her handbuilding class and has scheduled another to start mid-March. The sign-

up sheet is at the studio. Her class is limited to six people, so if you want to attend sign up soon. I believe she already has two people interested before she even put the sheet up.

- **Workshops:** Orbry Chamblee has done an outstanding job of coordinating some workshops. The first workshop of the year will be Gary Huntoon the weekend of March 23-24. It is a two-day wheel type workshop at the studio. Gary has been at the studio in the past but discussed techniques other than wheel throwing, so this will be new for the studio. It's only \$75, so sign up now by contacting Don Hudnall. There will also be a sign-up sheet at the studio. Orbry is currently in talks with Joe Bob Salazar for a potential workshop in May.
- **Glaze Room:** The glaze room gets better and better. The glaze committee recently hung the cone 6 test tiles on the shelf supports. This way you can pull one off and look at it closely. Just remember to put it

back on its hanger when finished. You will also notice it is much cleaner and more open looking since the studio clean up. I know what changed cause I was there during the clean up, but can you identify what changed?

- **Kiln Misfire:** During one of the last firings it appears that just about everyone's glaze melted off their piece onto the kiln shelves. Some people were probably upset. So what happened? This winter one of the kilns did not fully fire to cone 6, so the pieces were transferred to the other cone 6 kiln and refired. Unfortunately that kiln also had problems and did not fully fire. The "kiln guy" came and repaired the two kilns and the pots were fired for a THIRD time, this time to cone 6 temperature. At first we thought that the multiple firings had caused all the glazes to run much more than normal, but after consulting with Karla Wagner we believe that the excessive running was a result of the glazes being applied too heavily and/or the result of applying two glazes that (cont'd on page 4)

Studio Calendar

- **Apr 5—Studio meeting. Burnishing; bring leather dry or bisque. April pot judging for PIP.**
- **Apr 21-22—Member workshop: Barrel-Wood firing on Saturday 9:00 am. Unload Sunday noon.**
- **May 3—Studio meeting. Sgraffito by Carole Standridge & Don Hudnall.**
- **Jun 7—Studio meeting. Gas kiln loading.**
- **Jun 9—Member workshop: Gas kiln firing (8:00 am till finished)**
- **Jul 5—Studio meeting. Glaze application.**
- **Aug 2—Studio meeting. Trimming using sissy wads, foam & Giffin Grip.**
- **Aug 11—Cylinder throwing for PIP.**
- **Sept 6—Studio meeting. Chattering; bring leather ware.**
- **Oct 4—Studio meeting. Glaze application (spraying)**
- **Oct 6—Member workshop: Studio clean-up at noon.**
- **Oct 13-14—Pottery in the Park**
- **Nov 1—Studio meeting. Pug mill demo.**
- **Nov 17-18—Empty Bowls throwing weekend.**
- **Dec 6—Holiday Party @ Clubhouse Room #2**
- **Dec 8-9—Empty Bowls throwing-trimming weekend.**

President's Space

- **Kiln Misfire (cont'd from page 3)** became excessively runny when combined together. Karla tells us that the first two firings that did not reach cone 6 temperature would have firmed up the glazes and would not have contributed to excessive running upon the third firing that reached cone 6. Our studio is a community effort, and we share each others pain. We

try very hard to keep mishaps from happening; however, tragic things do occur sometimes. As a community studio and as individuals we need to learn all that we can about our glazes. Test, test, test! We should make it a habit to test first in pieces that will contain runny glazes until we know exactly how each glaze will fire alone as well as in combination with other glazes. I

want to send a special thank you to Sharon Wetherby, who took the time to clean all the melted glaze off the kiln shelves. That was a lot of hard work.

Wow! All that is just February. Wonder what will happen in March. Thanks to all and hope to see you at the meeting in March.

~ Don Hudnall

Food for Thought

Runny glazes are sometimes great INSIDE bowls but not so great on the outside. Ron Durham repeatedly advised his students to apply glazes no more than a fingernail thick.

Speaker Highlight (cont'd from page 2)

each glaze on a white and red clay body, attempt to ensure that optimum glaze properties are maintained, and identify glaze combina-

tions that can create problems.

Recommended Reading.

Glazes: Cone 6 by Michael Bailey, *Mastering Cone 6*

Glazes by John Hasselberth & Ron Roy, *Glazes and Glazing Techniques* by Greg Daly



Ron Hollister discusses glazing at the February meeting.

Event Notices

Exhibit. Ishmael Soto Retrospective *Vessels and Inspirations* January 26 thru April 1, 2007, at the Mexic-Arte Museum, 419 Congress Avenue, Austin, TX
<http://www.mexic-artemuseum.org/>

Event. **NCECA** 2007, 41st Annual Conference, *Old Currents/New Blends: A Distillation of Art and Geography*. Louisville, Kentucky, Kentucky International Convention Center, March 14-17.

Call for Entry. 2007 Kiln God National. Deadline April 1. Gecko Gallery, Chicken Farm Art Center, San Angelo, TX

Exhibition dates April 21 thru May 21, 2007. Juror: Jim Bob Salazar. Open to artists in the 50 United States. Juried from work. Fee: Participants may enter up to two entries at \$15 per entry. Entries should be made predominately of clay, have presided over at

least one firing and have the ability to withstand 1000 degrees F. Opening to take place in the Gecko Gallery at the Chicken Farm Art Center during Ceramic Week in San Angelo and will become a virtual exhibit on KilnGodNational.com. For prospectus and entry form, visit KilnGodNational.com or send SASE to Kiln God National, 1517 S. Van Buren, San Angelo, TX 76901.



2004 Kiln God National
1st Place, Jim Bob Salazar

Editor's Ramblings

I hate it when my pottery becomes a little too dry before I can add an attachment, or if it doesn't dry evenly and the attachment pops off. I found a recipe for **Spooze** on the internet that works very well for me when I need desperate measures to "glue" stuff back on.

Here's the [Spooze](#) recipe.

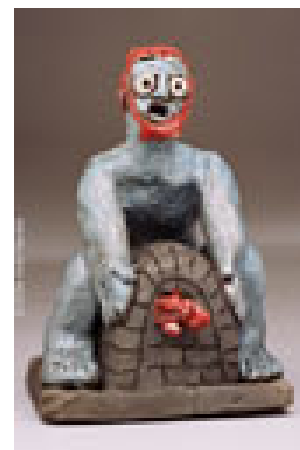
Mix the following:

- 1/3 dry clay body you are using
- 1/3 vinegar
- 1/3 corn syrup.

Add a drop or two of peroxide to keep the spooze from fermenting. You can thin by adding more corn syrup or vinegar. Make

thicker by adding more of the dry clay body. I use my dried clay trimmings and store small batches of each clay body. Be sure to wash your tools, brushes, etc., after using. The spooze will become like cement when dry.

~ **Sharon Wetherby**



2004 Kiln God National
Billy Ray Mangham

Tony Merino has written a review on Brian Fridge photography. To check it out go to:

http://live.glasstire.com/index.php?option=com_content&task=view&id=1274>sect=Articles>cat=Review



Organization

Potter's Studio
Studio Phone: 817-570-9086

Organization Address
LMRA

3400 Bryant Irvin Road
Fort Worth, TX 76109

Phone: 817-732-7731

Ext 102 - e-mail:

debbie@lmra.org

<http://www.lmra.org/>

Staying Centered

WE'RE ON THE WEB!

<http://lmrapotterystudio.com/>

The fully-equipped Potter's Studio is open seven days a week during LMRA hours. Meetings are held on the first Thursday of the month at 7:00 p.m. unless notified otherwise. Classes are held on Mondays and Tuesdays in the Pottery Studio. Membership Fee: \$60 Individual; \$120 Guest.

2007 Officers

President Don Hudnall, 817-676-4134 (dhudnall@tx.rr.com)

Vice President ... Carole Standridge (claylady1035@earthlink.net)

Secretary Holly Thompson, 817-367-7609 (hollyclay@sbcglobal.net)

Publicity Barbara Throne, 817-626-1186 (bthrone@sbcglobal.net)

Commissioner ... Mike Sawatzky, 817-935-4582 (mike.s.sawatzky@lmco.com)

Committees

Firing Committee: Various

Glaze Committee: Carole Standridge

Holiday Party: Mike Sawatzky

Pottery-in-the-Park: Cristi Allen

Newsletter

Editor: Sharon Wetherby, 817-926-9828 or 817-762-3132 (work)

e-Mail: wetherbyss@sbcglobal.net

Web Site

Webmaster: Sarah Fields, webmaster@lmrapotterystudio.com

Yahoo Groups

<http://groups.yahoo.com/group/LMRAPottery/>

To send an e-mail to the group: LMRAPottery@yahoogroups.com

- To Subscribe — LMRAPottery-subscribe@yahoogroups.com
- To Unsubscribe — LMRAPottery-unsubscribe@yahoogroups.com