

Potters Studio Newsletter

January 23, 2012

Volume 7, Issue 1

Special points of interest:

- Our monthly meeting will be held on Thursday, February 2, at 6:30 p.m. in the Studio
- Send articles you want published to Sharon Wetherby by the 15th of each month (e-mail address is on last page)

Demo at January Meeting

Jef Barton demonstrated how to create large sculptural pieces using one of the studio's plaster molds, which he placed on a wheel.



Inside this issue:

Meeting Minutes	2
Studio Calendar	2
Extruder Tips	4
Events	7
Kiln for Sale	7
Organization	8



January Meeting Minutes by Thea Patterson

Volume 7, Issue 1

LMRA Pottery Activity minutes
January 5, 2012

The meeting was called to order by President Barbara Baker. Nineteen members and one guest were in attendance. No minutes were presented as the last meeting was the Christmas party.

Old Business

Empty Bowls

- The event will be on Friday, February 17, 2012. Anyone interested in volunteering for the event should contact Janet Rodriguez at www.hartstreetpottery.com.
- So far we have delivered 378 bowls to the Tarrant Area Food Bank. We are in need of regular-sized bowls. Our goal is 600 bowls.
- Trinity donated 250 pounds of white stoneware for use in making Empty Bowls.

Newsletter

- Newsletters are transmitted via e-mail. Anyone not receiving a newsletter should contact Sharon Wetherby.
- Anyone with an item for the newsletter should let Sharon know by the 15th of each month.

New Business

New Members and Guests

- New members Steven and Beverly attended their first meeting this month.
- Bobbie, a prospective member, visited the meeting.

Classes

- The daytime wheel class will start next Friday.
- Barbara Baker said that several new members have requested a workshop on glazing techniques. None has been scheduled at this time; however, Barbara said she will be at the Studio on Saturdays and will be available to assist anyone who needs help.
- Kay and Thea said members are welcome to drop in on the last day of their wheel classes for help with glazing. Final class dates are on the studio door.

Workshops

- Orbry reported that the Annie Chrietberg workshop on making and testing glazes is full.



Studio Calendar:

- Feb 2, monthly meeting
- Feb 17, Empty Bowls event at Amon Carter Exhibit Hall
- Mar 1, monthly meeting
- Apr 5, monthly meeting
- May 3, monthly meeting
- Jun 7, monthly meeting

Special points of interest:

- Studio has delivered 378 bowls to TAFB
- Friday daytime classes started
- Tuesday night glaze classes in session



(Continued on page 3)

(Continued from page 2)

- Several members have requested that Lee Bell teach a workshop on her moon sculptures.
- The 2012 Fabulous Four workshop has been scheduled for April 28th and 29th. The fee is \$175 for members, \$200 for non-members, if paid by April 1, 2012. Thereafter the fee will be \$200 for members and \$225 for non-members. Information about the four artists is on the Pottery Studio website.

Firing Committee

Bobby Darr advised that our three electric kilns are all old and have idiosyncrasies in firing; each requires a different setting for most effective firing. Also, it is important that anyone unloading the kilns write the results of the firing on the clipboard page for that firing, and place any cones removed from the kiln on the controller.

Bobby said the formation of a committee to oversee the loading, unloading and firing of these kilns would help ensure consistency and success. The Committee would also be in charge of repairing the kilns. Barbara Baker made a motion that a Cone 6 Firing Committee be formed to oversee the loading and firing of the electric kilns, which was passed by the members present. Barbara Throne volunteered to head the committee. Anyone interested in participating should contact her.

Glaze Committee

- Bobby reopened the motion that Janet Pharris's Yellow Salt Glaze be added to the cone 10 palette, and that Nagamoto Teal be removed. This was passed by the members present.
- Anyone interested in joining the Glazing Committee should contact Bobby Darr. Members of the committee are responsible for making one to three of the glazes in the Studio palette.

Miscellaneous

- Thea said that locker fees (\$10) are due again. She has put envelopes on everyone's locker. Envelopes should be dropped in the lock box on top of the refrigerator.
- Kay said she is responsible for writing a monthly article about the Pottery Activity for the LMRA newsletter. Anyone with ideas or suggestions for these articles should contact her.
- Kay reminded everyone that we will have a mini-show in August, the winner of which will appear on the Pottery in the Park postcard. In addition, the annual Studio competition pieces will be judged at the August meeting; this year the competition will feature pieces created

Special points of interest:

- Fab Four workshop Apr 28—29
- Cone 6 firing committee formed
- Yellow Salt added to cone 10; Nagamoto Teal deleted
- Locker fees due
- Kay needs Studio news for the LMRA Newspaper
- Mini Show and Extruded Pieces judged in August

(Continued on page 4)

with extruded clay. At least 51% of the piece should be formed from extrusions.

There was no additional business and the meeting was adjourned. Angela Cloud donated a large bowl for the pot draw, which was won by Bobby Darr. After the meeting, Jef demonstrated using plaster molds on the wheel to create large pieces.

Tips for Extruding Clay (Ref. *The Extruder Book* by Daryl E. Baird, pp 5—18)

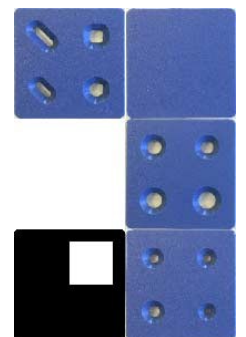
Never used an extruder before? Thinking about using the Studio's extruders to make a prize winning piece for the August competition? Here are a few tips to help you get started.

Preparing Your Clay. Save your back and shoulders by using good, well-wedged clay. Always wedge your clay well before loading it in the extruder. You can use scrap clay, but you should prepare it as though you were going to use it on the wheel. Almost any clay that works well on the wheel will work well in the extruder; however, don't try to push hard, stiff clay through an extruder. Making hollow tube forms generally requires more plastic clay than needed when making solid coils. If your clay is too wet, the extruded forms are easily distorted in handling.

Loading the Clay into the Extruder. Shape the clay into a mass just slightly smaller than the inside of the extruder barrel. Pack the clay in the barrel out to the edges with your fingers or a piece of wood.

Making the First Extrusion. The first piece of clay passing through the die will probably come out bent and have an uneven edge. Keep pushing till the form begins to straighten. Wire off the uneven bottom. You can rewedge this to add to the next loads. Having a helper certainly helps the process. If you are working alone, underfill the barrel so the handle is lower and closer to the barrel. You can stand directly in front of the extruder and press the handle down with your chest. This method lets you use both hands to guide the clay as it comes out the extruder.

Handling the Fresh Extrusion. If all goes according to plan, you will have your first extrusion hanging out of the bottom of the barrel. Now, how to cut it off! If it's a coil, you can take hold of the coil with both hands and pinch it free of the die with the higher hand. If it's a hollow tube form, make a loop of a cutting wire (that isn't full of kinks) larger than the diameter of the extrusion. Slide the loop up from the bottom of the tube up to the point you want to cut it off. Smoothly pull the wire through the clay while holding the tube with your other hand. As the clay comes free, drop the wire and take hold of the tube with both hands. Place the extruded form on a paper or cloth covered table. Tip: If you are making a square or



(Continued on page 5)

(Continued from page 4)

rectangular-shaped extrusion, begin your cut at one of the corners. This method will cut the clay with less distortion.

Adjusting the Extrusions. After extruding all the clay, you will need to decide if you are going to use the extrusions “as is” or if you are going to alter the shapes. If you are going to alter the shapes, you will need to do so while the clay is still soft to avoid cracking and splitting. If you are going to use the shapes “as is,” roll the cylinders on the table a little to straighten. Use small boards to straighten the sides of square, hexagonal, or triangular shapes. As the clay firms up, you can cut/modify the shapes.

Clean the Extruder. Remove the die and holder. Pull the plunger out of the barrel. You can save any extra clay in the barrel and in the die to re wedge and use for future projects. Get a bucket of warm soapy water and a sponge; wash the barrel, the plunger plate, the die, and the die holder in the soapy water before the clay turns crusty. After everything is dry, wipe a light coating of WD-40 over all surfaces. Tip: If you are working with a wooden die, remove it from the extruder soon after finishing to avoid warping or delaminating the die. Instead of washing wooden dies, scrape them clean with a plastic putty knife or a wooden rib. Treat wooden dies with oil on surfaces that will contact the clay before use.



Keisha's Extruded Test Tiles

For Glaze Class

FABULOUS FOUR-ARTIST WORKSHOP

Hands-On Rotation Workshop — 4 Hours with Each Artist

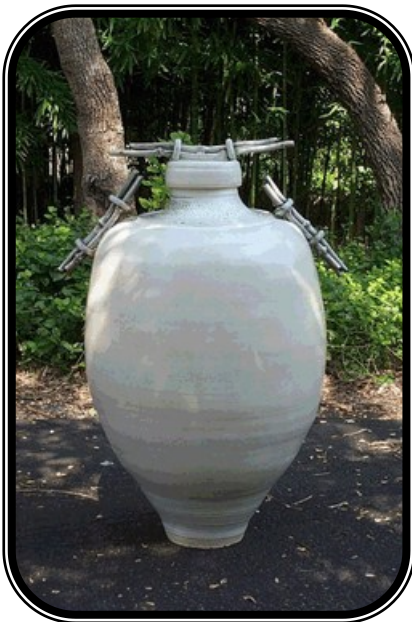
Saturday/Sunday, April 28 & April 29, 2012, 8:00 A.M.—5:00 P.M.

Free Artist Reception Open to the Public on Friday, April 27, at 6:30 P.M.

Lockheed Martin Recreation Area, 3400 Bryant Irvin Road, Fort Worth, TX 76109

Featured Artists:

Ken Orr, www.kenorrstudios.com/index.html; Christie Cone, christieconeceramics.com/; Max Butler, www.bastropfiredarts.org/mbutler.html; Brandon Phillips, supportyourlocalpotter.blogspot.com/



Ken Orr

Early registration deadline is April 13, 2012. Send check or money order payable to LMRA to Orbry Chamblee, 1819 East Lake Drive, Weatherford, TX 76087.

For workshop details, contact Orbry at (817) 223-6600 or e-mail orbry1@charter.net

Workshop Fees

LMRA Studio Members \$175

Non Members \$200

After April 13 Deadline \$225



Christie Cone



Max Butler



Brandon Phillips

Juried Hard and Soft Exhibition.

Feb 4—Apr 3 at the Center for the Visual Arts, Denton, TX 76201. This annual competition and exhibition of contemporary crafts was started in 1987 and is now in its 23rd year. Recognized nationally, *Materials: Hard and Soft* attracts hundreds of entries from every state in the union. Nationally recognized jurors select the show from slides and then award \$5,000 in prize money. The juror has always selected the winning pieces on-site. A catalog is printed. Many of the artists seen in the *Materials* exhibitions have been featured in national publications such as *American Crafts*.

ArtScape 2012. Mar 16—18, open daily 9am—5pm at the Dallas Arboretum in Dallas. Delight in the joy of spring when ArtScape, the Dallas Arboretum's juried fine art and fine craft show and sale, brings together outstanding artists from around the country. This three day show takes advantage of spring break when attendance and gardens are at their peak. Dallas Blooms, running Mar 3 - Apr 8, is the premier floral festival in the Southwest and is regularly on MSNBC's "Top Ten Things to Do in America in the Spring." ArtScape will be showcased the third week of the festival. ArtScape weekend will feature artists from around the country, entertainment throughout the garden and food and fun for everyone.

Deep Ellum Arts Festival. Apr 6—8; Friday 5pm—10pm, Saturday 11am—10pm, Sunday 11am—7pm. Held in the Deep Ellum Entertainment District. 100 exhibitors, cool street festival with great food, music and art.

Main Street Fort Worth Arts Festival. Apr 19—22 in downtown Fort Worth. Thursday 10am—10pm, Friday & Saturday 10am—11pm, Sunday 10am—8pm. 235 exhibitors.

Fiesta Arts Fair. Apr 21 & 22 at the Southwest School of Art, 300 August, San Antonio, TX. Saturday 10am—6pm, Sunday 11am—5pm. 120 exhibitors.

Art in the Square. Apr 27—29 in Southlake Town Square; Friday 4pm—10:30pm, Saturday 10am—10:30pm, Sunday 11am—6pm. 140 exhibitors.

Fab Four-Artist Workshop. Apr 28—29 at LMRA Pottery Studio. Featured artists are [Ken Orr](#), [Christie Cone](#), [Max Butler](#), and [Brandon Phillips](#). Free artist reception on Friday, Apr 27, at 6:30 pm. Fees: LMRA Studio members, \$175; nonmembers, \$200. After April 13, early registration deadline, fee \$225. For details contact Orbry Chamblee (817) 223-6600 or orbry1@charter.net

Coming Events:

- **Hard and Soft Exhibition, Denton**
- **ArtScape, Dallas**
- **Deep Ellum Arts Festival, Dallas**
- **Main Street Arts Festival, Fort Worth**
- **Fiesta Arts Fair, San Antonio**
- **Art in the Square, Southlake**
- **Fab 4-Artists Workshop, LMRA**

Skutt Kiln for Sale

The kiln belonging to Jack Patrick, longtime TPSG and LMRA member who recently passed away, is for sale. It is approximately 7 years old, Skutt Kiln model # 1227-3 with kiln sitter. It has a 22" opening and is 27" deep. It is in working order, comes with posts and a few shelves. \$400 OBO

If interested, contact Penny Patrick at (817) 366-3989.

